



Rochdale Town Hall Heritage Skills Programme







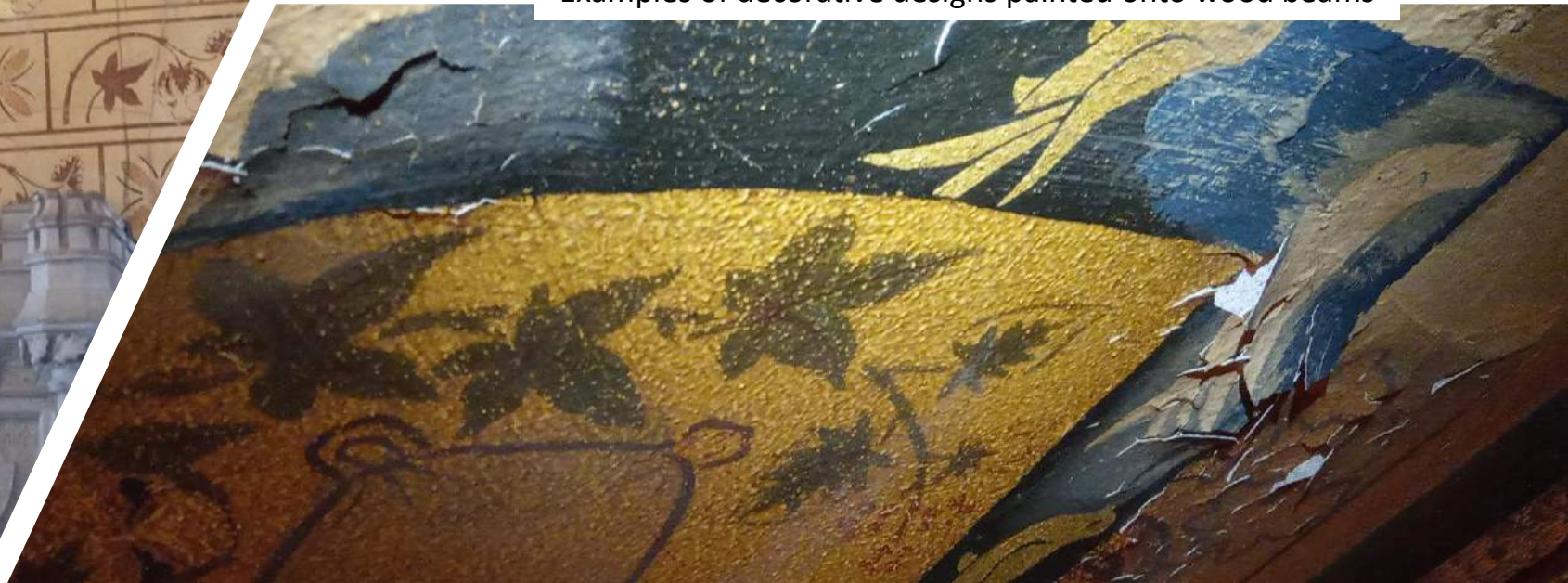
Rochdale Town
Centre
Regeneration
Town Hall
Refurbishment

Building restored back
to its former glory
More accessible for
everyone
More activities
planned
New events and
exhibition spaces
The grounds will be
refurbished

Jenny Truran from Lancashire Conservation Studio on site at the town hall carrying out cleaning tests on the painted walls



Examples of decorative designs painted onto wood beams





The delicate interiors of the town hall have been covered to protect them from damage during the works



Rochdale Town Hall Heritage Skills Programme

- 12week opportunity to experience working in a heritage setting
- Introduction to various aspects of museum/heritage work.
- Opportunity to carry out, hands on work on objects.
- Provide an individual with a sound knowledge base and real work experience; should they wish to progress to work or further study in the Heritage field.

Programme led by

Professional Museum Staff from Lancashire Conservation Studios who will be carrying out conservation of the decorative walls and features within Rochdale Town Hall.

- Opportunity for specialist training
- Tile conservation specialists
- Woodwork specialists
- Specialists handling technicians
- Museum collection documentation



Conservation & Collections Team



Your 12 week programme

Each Week


One day training
Two days practical

Tues- Thurs
10am – 4pm

The programme is led by Jenny Truran- Object Conservator for Lancashire Museums

The practical training will be delivered by the specialist conservators. Jenny Truran, Tim Phelps, Lesley Durbin, Mike Bowes

Supported by training in museum skills, in Documentation, Collection Care, IPM undertaken by the Lancashire Museum specialist team.



Introduction to Collection Care

- Museum Environment
 - Light
 - Relative humidity
 - Temp
 - Pests





Introduction to Conservation Cleaning

Conservation Cleaning Techniques



- Ceramics
- Metalwork
- Decorative wooden surfaces
- Painted surfaces
- Stone and tile



Work on decorative features within our Rochdale Town Hall



Wooden features such as doors and fireplaces will also need carefully cleaning

Architectural Tiles

Conservation and Restoration

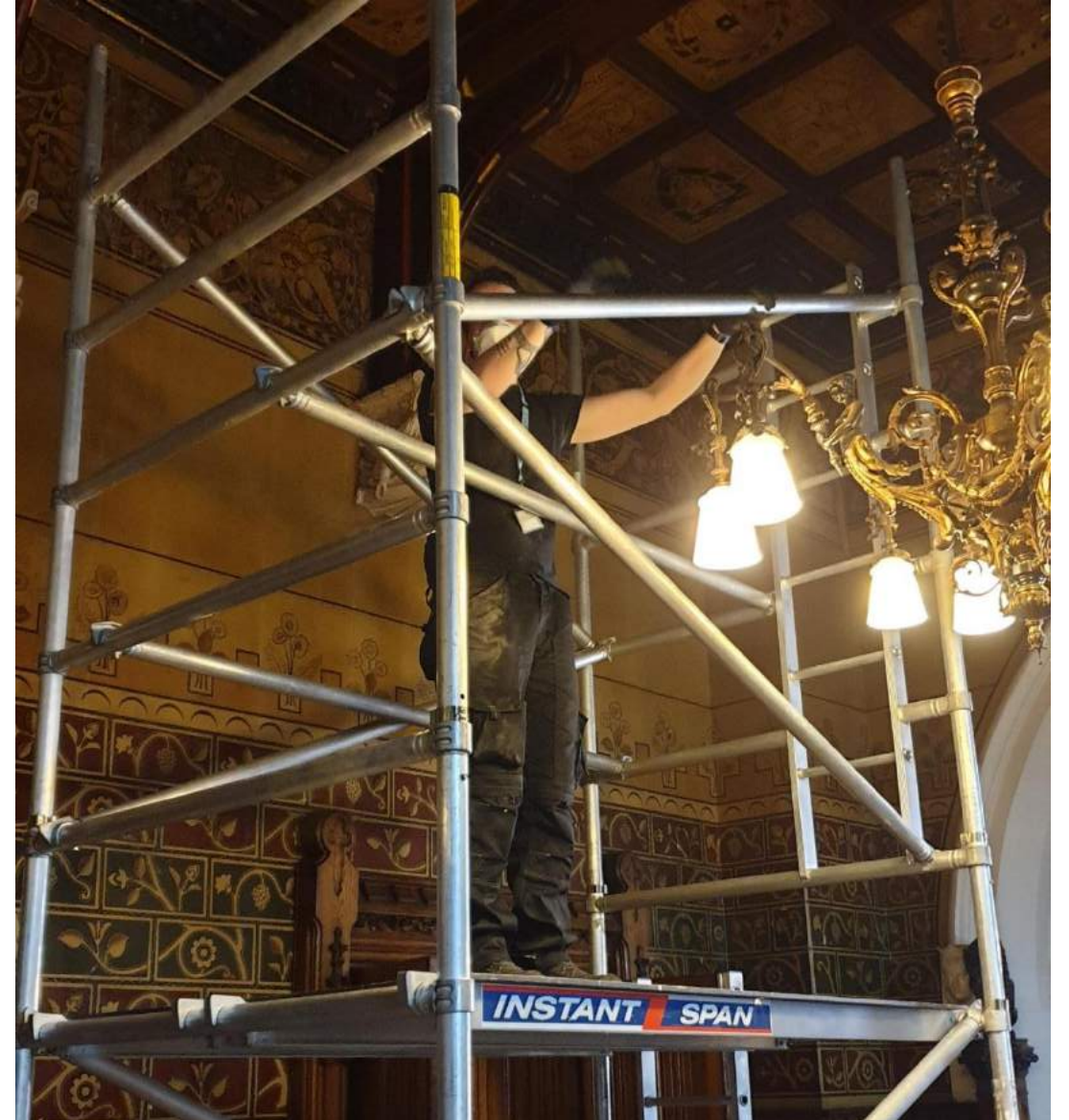
Lesley Durbin



- Three lectures & sessions as an introduction to museum practice and cleaning of architectural tiles.
- Lesley Durbin is an internationally renowned expert on the Conservation & Restoration of Tiles
- Rochdale Town Hall has wonderful examples of the famous Staffordshire Minton Tiles



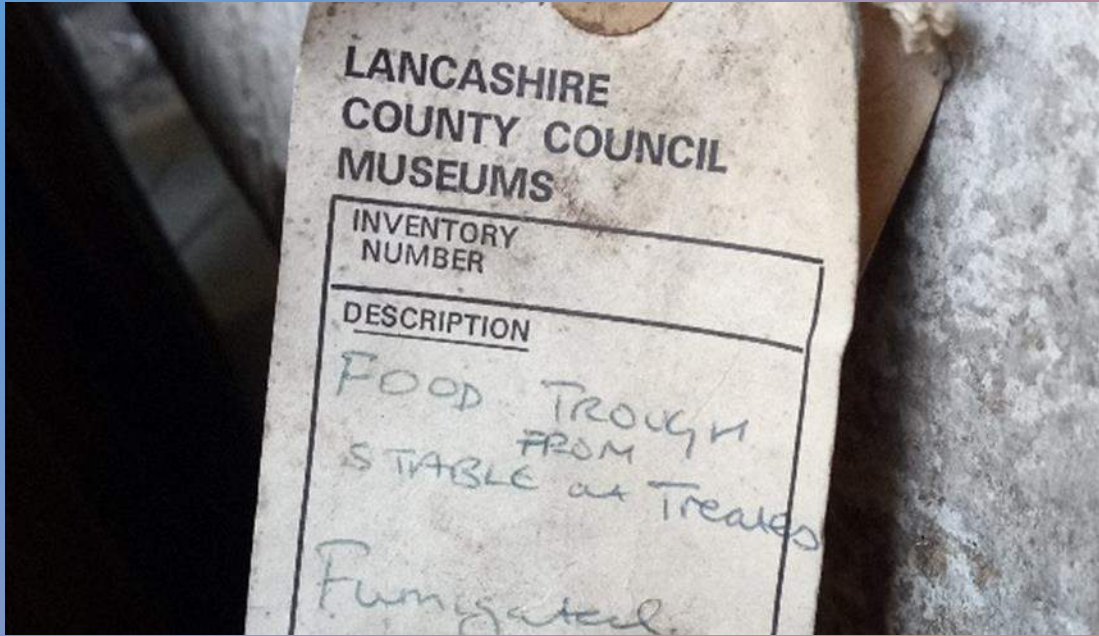
Example of the minton floor tiles which are showing signs of wear and tear and will need cleaning.
A protective layer will be added to prevent further deterioration in the future.



Additional training will be given to those who would like the experience to work on upper walls and ceilings using a scaffold tower.

Learn about a
range of aspects of
museum operation

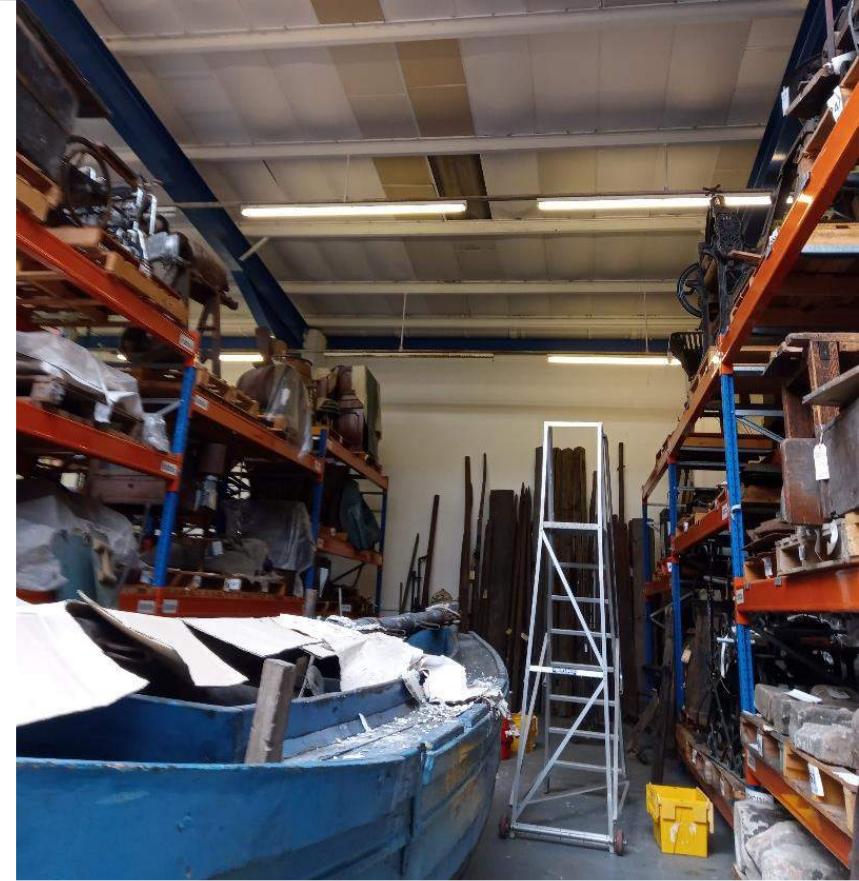




Museum Documentation

- Collection management systems
- Condition checking
- Marking and labelling
- Packing Collections





Undertaking research Working on Heritage Collections

Where?

- Mainly delivered on-site at Rochdale Town Hall in designated training rooms
- Practical work on-site
- Potential site visits and training at Lancashire Conservation studios



So why do this programme???

Getting experience of working in a heritage environment can be the first step in a new career which could lead to employment in a range of industries.



Technical work, packing,
handling and making mounts



Transporting Collections & installing Exhibitions or even specialist house moves.

Moving 14th /20th Hussars Collection Preston to Winchester December 2019



Painting
Conservation



Furniture Conservation



Natural
History
Conservation

Creating Designing & building exhibitions



HOW THE ROMANS MADE CLOTH

SPINNING

Before the use of spinning wheels, spinning was carried out with a spindle, a straight spike made from wood. Fitted to the spindle, usually at the bottom, was a whorl, a disc shaped object with a hole in the middle, acting as a flywheel. The raw fibers (roving) were attached to a groove or notch in the spindle, the spindle was then made to rotate causing the roving to extend and twist into a yarn, collected at the top of the whorl.

WEAVING

The most common loom used in the Roman period, and earliest developed, was the warp weighted loom. It is an upright loom constructed from two beams connected at the top by a bar called the cloth bar. The warp threads ran vertically from the cloth bar, and for a basic weave were separated into odd and even. Running parallel to the cloth bar and dividing the odd and even threads is the shed rod. The warp threads are tied at the bottom of the loom by cord to warp-weights, these keep the threads taut and prevent them becoming tangled. Warp-weights are usually shaped as pyramids, or spheres, with a hole cut through the weight. The weft thread was passed through the warp threads using a weft bobbin.







Your 12 week programme

Each Week


One day training
Two days practical

Tues- Thurs
10am – 4pm

The programme is led by Jenny Truran- Object Conservator for Lancashire Museums

The practical training will be delivered by the specialist conservators. Jenny Truran, Tim Phelps, Lesley Durbin, Mike Bowes

Supported by training in museum skills, in Documentation, Collection Care, IPM undertaken by the Lancashire Museum specialist team.





Any Questions?

- Thank you for listening.
- Heather Davis, Conservation & Collections Manager
- Lancashire Conservation Studios, Lancashire County Museum Service
- **Jenny Truran will be on site at RTH to answer further questions on this programme on the 9th / 16th / 23rd Sept. 11.30 - 12.00 & 3.30 -4pm**