



**Innovation in
advanced
manufacturing:
Levelling up the
North East of
Greater Manchester**

September 2021

Our Overall Vision

- Creation of a mega cluster of manufacturing innovation
- Of regional, national and international significance



Why Clusters Matter

European Panorama of Clusters and Industrial Change, EC, 2019

- Higher wages than in other locations
- Higher wage growth
- Higher employment growth
- More global frontier firms
- More high growth firms
- More rapidly growing start ups



Key Characteristics

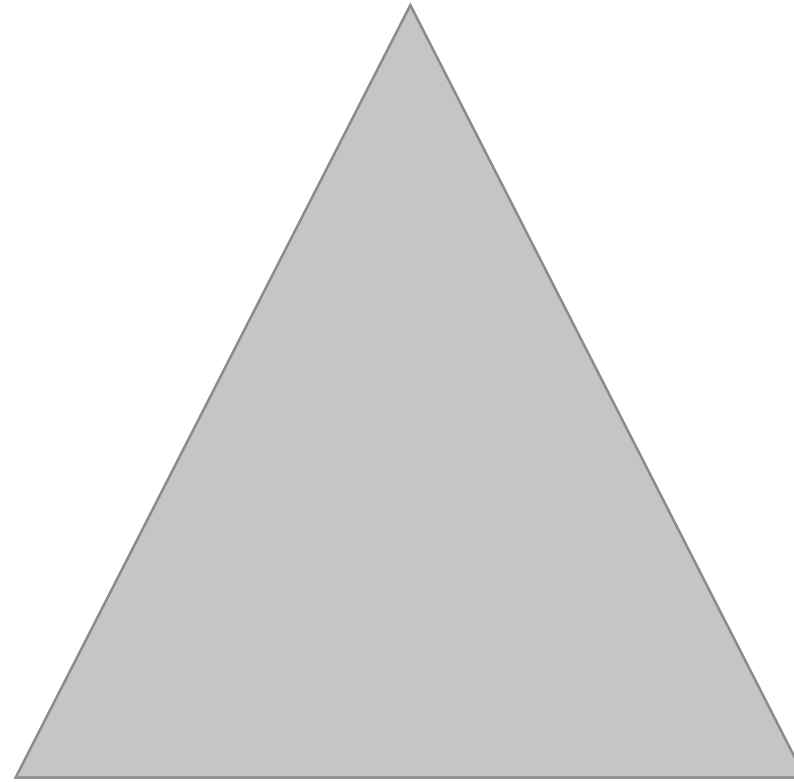
- Seminal work is Michael Porter, 1998. *Clusters and the new economics of competition* (Vol. 76, No. 6, pp. 77-90). Boston: Harvard Business Review
- Co-location of companies
- Functional relationships such as supply chain, complementary products and activities (R and D)
- Presence of institutional relationships (e.g. Formal associations/research hubs, special linkages with local authorities, universities)



Approach

Materials

Machinery



Made Smarter



Gateway North

- Advanced Manufacturing Productivity Initiative (AMPI) focuses on SMEs and advanced machinery
- Gateway North provides a location for a Catapult focused on Materials and Sustainable Manufacturing
- Provides ability for large firms to translate research
- Focus on advanced materials is complementary and additive to focus of AMPI in both scale (size of firms) and scope (specialisations)
- The area will be populated with SMEs and start-ups
- Strengthen spin-off activity from universities including work with Northern Gritstone investment company.

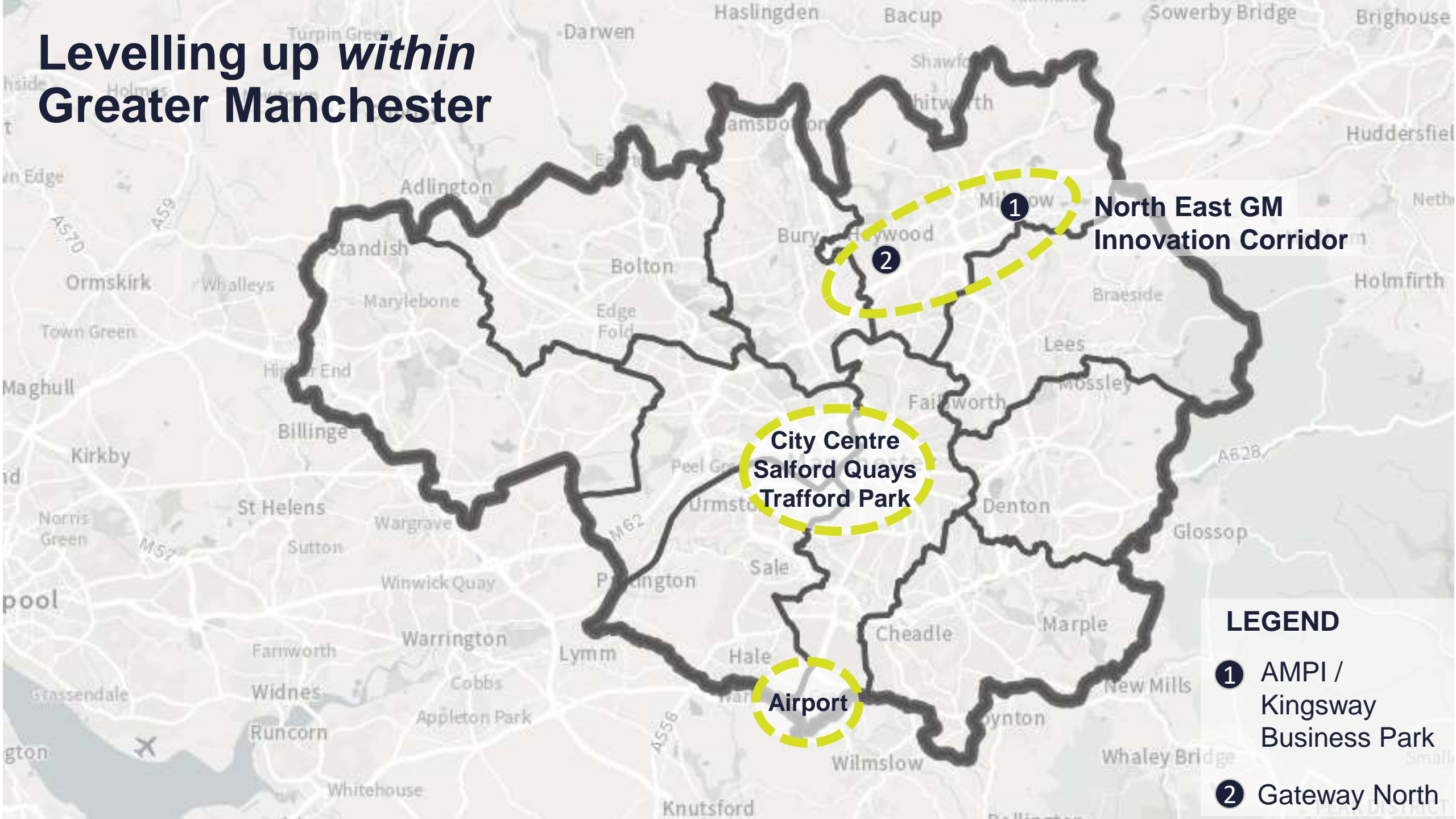


Levelling up *between* and *within* regions

- Productivity and income inequalities across places are “self-similar”: Andy Haldane, seminar to Policy Exchange 28 June 2021
- This means they show the same features, the same distributions, at different geographic scales
- The regional differences in the UK are well known.
- But the same patterns exist **within** the individual regions themselves
- Levelling up is not just about making the regions more prosperous. It is about enhancing the prospects of the poorer parts **within** each region



Levelling up *within* Greater Manchester



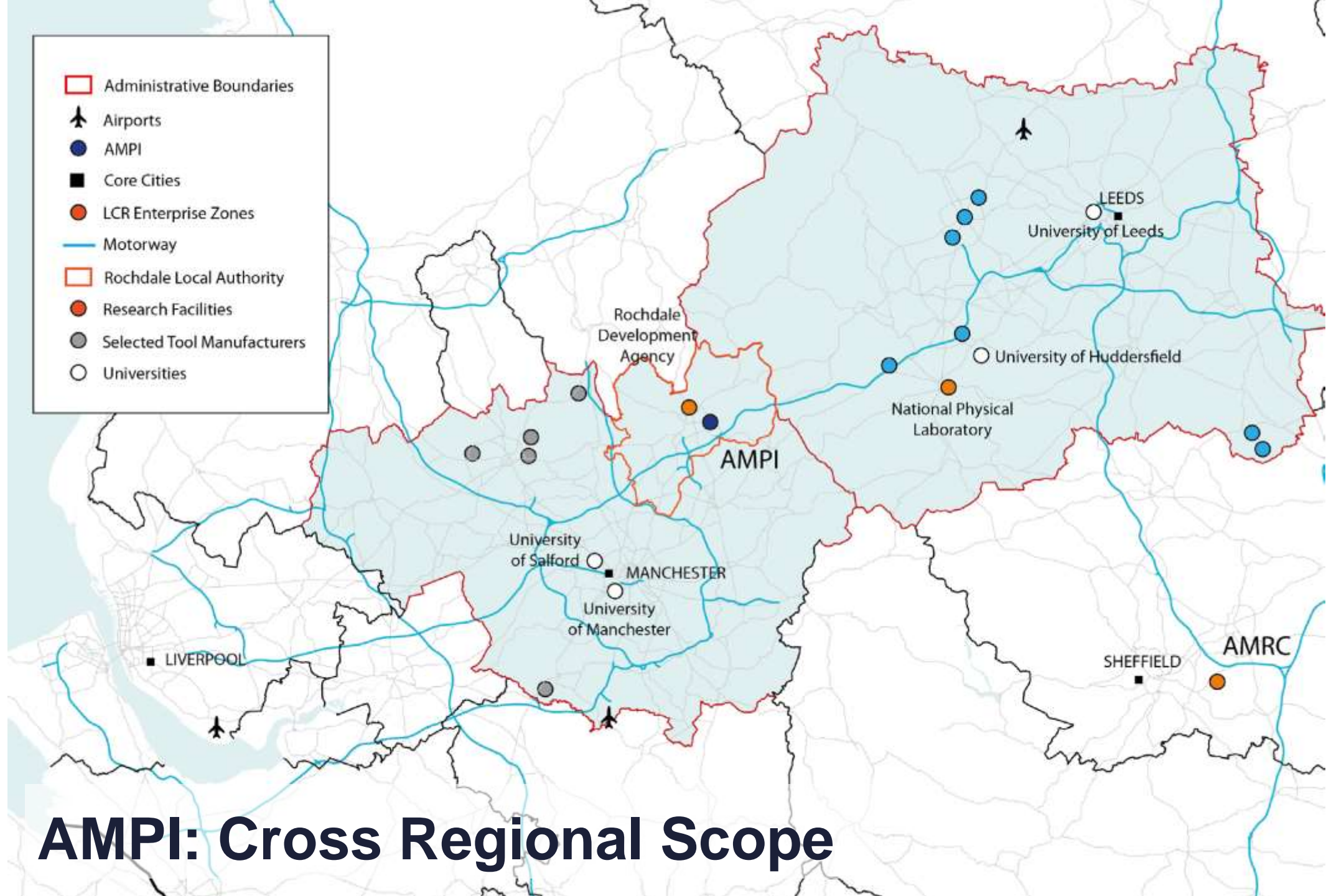
1 North East GM
Innovation Corridor

2 City Centre
Salford Quays
Trafford Park

Airport

LEGEND

- 1** AMPI /
Kingsway
Business Park
- 2** Gateway North



AMPI: Cross Regional Scope

Diffusion

- A key task is to address the “long tail” of low productivity
- To ensure that high technology *spreads*
- The Advanced Manufacturing and Productivity *Initiative* is the catalyst for SMEs to do this
- A *network* of companies has been established and is being expanded
- A number of local firms are already operating at the frontiers of technology and act as *exemplars/influencers*
- Active *collaboration* set up on the skills agenda with the local FE College, Hopwood Hall, a local training company (RTA) and the Rochdale Development Agency



Emerging Ecosystem

Gateway North

AMPI

A

ALDERLEY PARK
53° 16' 46" N 002° 14' 12" W



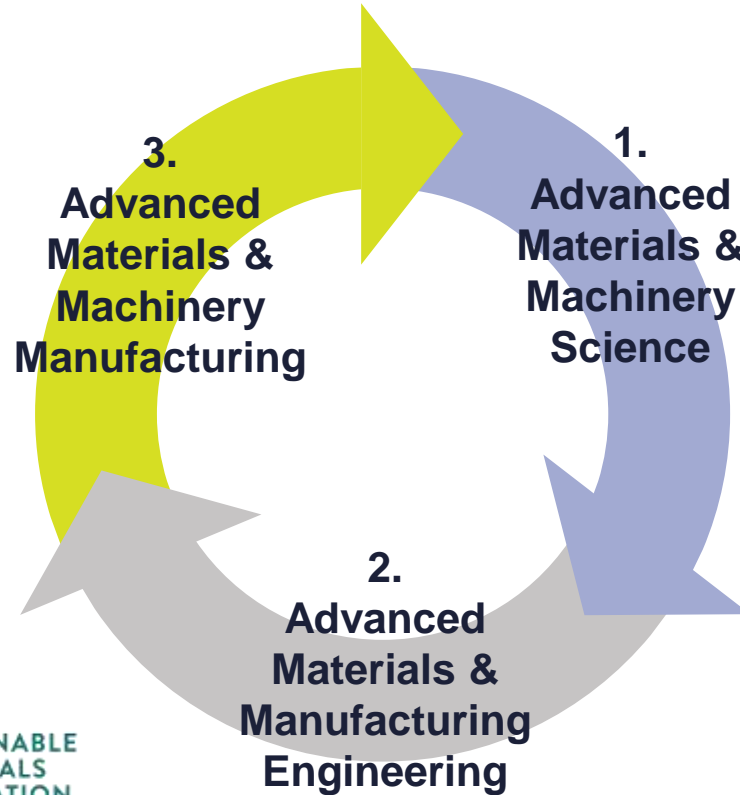
3M BUCKLEY INNOVATION CENTRE

PrintCity
3D · Innovate · Educate · Collaborate

Graphene
enabled systems Ltd

HENRY ROYCE INSTITUTE

NPL
National Physical Laboratory



University of HUDDERSFIELD
Inspiring tomorrow's professionals

National Graphene Institute



International Centre for Advanced Materials

UNIVERSITY OF LEEDS



Manchester Metropolitan University

GEIC





University of
Salford
MANCHESTER



University of
HUDDERSFIELD
Inspiring global professionals

MANCHESTER
1824
The University of Manchester

GMCA GREATER
MANCHESTER
COMBINED
AUTHORITY

Rochdale
Development
Agency



West
Yorkshire
Combined
Authority

CATAPULT
High Value Manufacturing



LOXHÅM
PRECISION



Testometric
materials testing machines

SIMKISS
Control Systems Limited



WAYLAND
ADDITIVE



The Manufacturing Technologies Association



CR Solutions

BAE SYSTEMS

RENISHAW
apply innovation™

SIEMENS

Advanced Machinery & Productivity Initiative

- A catalyst for the entire Gateway North project
- A “bottom up” initiative from local advanced manufacturing companies
- More than 50 letters of support from local, regional and national companies
- The key stakeholders, including the National Physical Laboratory meet every two weeks and have done for 6+ months
- A wider AMPI consortium of machinery businesses, academic institutions and government agencies that meets monthly and holds an Industrial Steering Group



Advanced Machinery & Productivity Initiative

- Active collaboration set up on the skills agenda with the local FE College, Hopwood Hall, a local training company (RTA) and the Rochdale Development Agency
- The bulk of Rochdale's Towns Fund's monies are allocated to a customised building for AMPI
- The NPL's Strength in Places involves key companies in AMPI and local universities
- Working closely with GM's Graphene, Advanced Materials and Manufacturing Alliance (GAMMA)



Current Status & Timescales



AMPI

£15m capital secured (Towns Fund)

£22.7m revenue funding secured
(Strength in Places Fund via NPL)

Gateway North

Value Proposition for translating
materials research underway

Release of land linked to Places for
Everyone Planning



Rochdale Development Agency

www.investinrochdale.co.uk